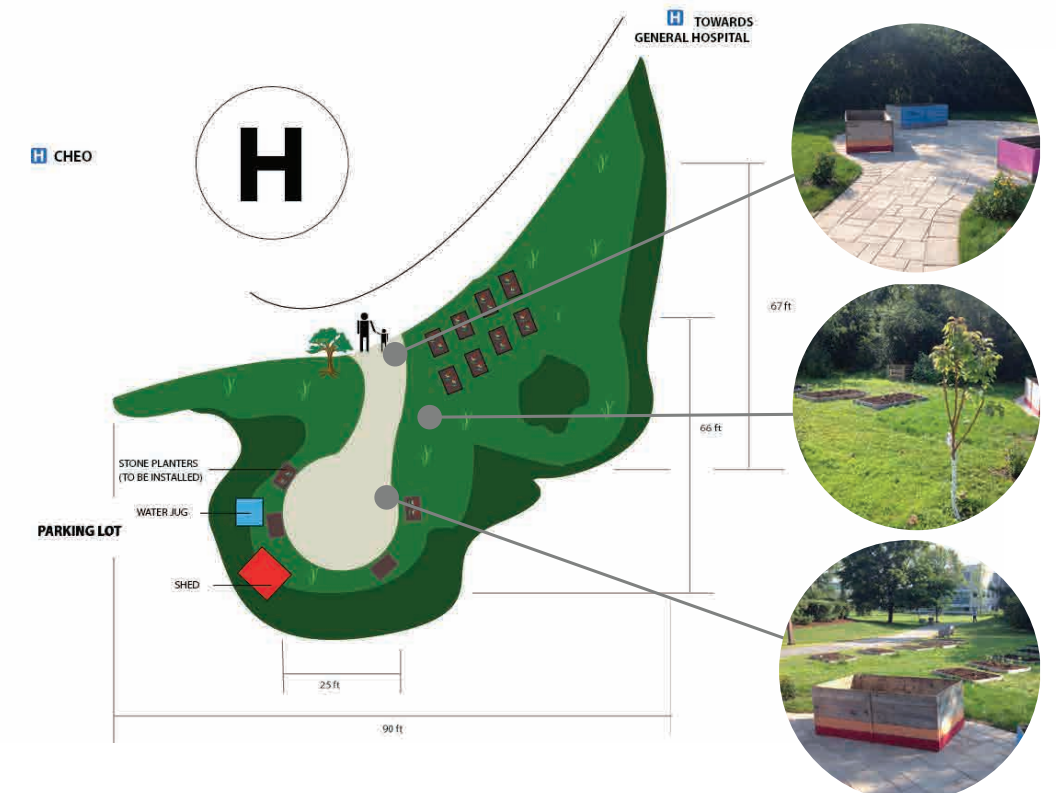


THE CHEO HEALING GARDEN

Universal Planter and Hand Washing Station

The Children Hospital of Eastern Ontario has created space for a Healing Garden. The accessible universal planter and hand washing station were designed to support programed activities for patients in the garden. The objective was to create an exiting, fun and stimulating experience in the garden through universal products.

These designs were developed through a site visit, meetings with physiotherapists, childhood learning experts and nurses. In addition the students did background research on typical childhood trauma and diseases, autism, mobility impairments and standards. The findings proved to be instrumental in the design of the products since many complex and inter related issues had to be considered. A process of intensive prototyping ensured that the products would be suitable for a wide ranges of users including adults (caretakers and relatives) and children with various levels of physical and cognitive ability.



CHEO Healing Garden and 25 foot round accessible path

DESIGN DEVELOPMENT & TESTING



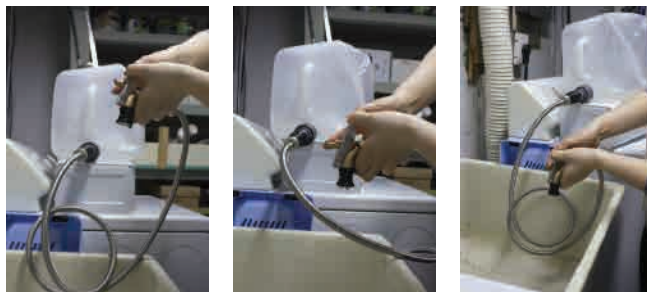
Testing on full scale prototype to determine optimal planter height, knee and leg clearance and arm reach. Full scale prototype testing with scale cutouts of children ages 2 to 14.



Small scale models to explore concept versatility and encouraged collaboration between various types of users. The goal was to find a balance between soil depth on the top and a large amount of clearance on the bottom for users with longer legs.



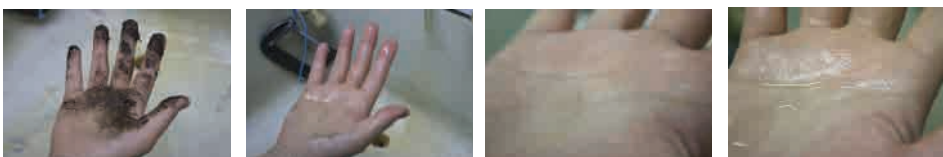
Determining the type of hand washing aid.



Testing the effectiveness of using the hose at different heights.



Determining the optimal height that a person can lift.

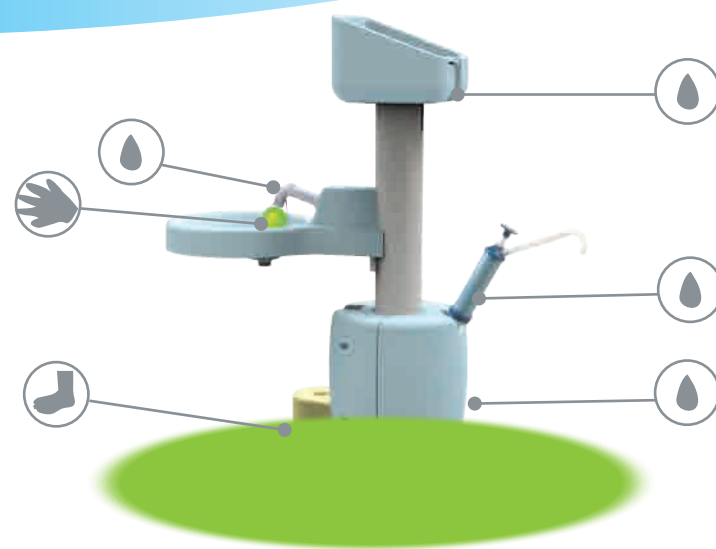


Testing hand washing for those who cannot use both hands. The silicone porcupine ball cleaned the participants hand effectively.

DESIGN FEATURES



- Space for planting plants in 6" deep soil and watching the grow.
- Table space for activities with ridge to stop pencils from rolling off onto ground.
- Family friendly and encourages collaboration.
- Seating for children, parents and caregivers to rest while enjoying quality time with one another.
- Wheelchair accessible to a wide variety of wheelchairs and body sizes.



- A retractable spray head for ease of use.
- A quick release water tank attachment for fast and easy connection
- A scrubbing ball helps single handed users to clean their hand. it also provides tactile stimulation to kids. The ball is washed while scrubbing and it could be removed to be sterilized at certain intervals if necessary.
- Gray water pumped out and used to water plants.
- A detachable step that can be relocated for use.

